



Linacre House, Archdale Close, Chesterfield, Derbyshire S40 2GE

 1

 2

 1

 C

£675 Per Month

PINEWOOD



Linacre House Archdale Close Chesterfield Derbyshire S40 2GE

£675 Per Month

**1 bedrooms
2 bathrooms
1 receptions**

- Well Presented Accommodation - One Bed Ground Floor Apartment
 - Modern Separate Kitchen with Washer/Dryer, Dishwasher
 - Modern Bathroom with White Suite
 - Allocated Parking to Rear in Communal Car Park
 - En suite Shower Room to Principal Bedroom
 - Walking Distance to the Town Centre
- Close to Local Retail Parks, Shops, Bars, Restaurants and Gym
- Great for Commuting as Close to M1 jnct 29 and Main Commuter Routes
 - Hallway With Storage Cupboards
- Close to Train Station, College and Royal Hospital





TOWN CENTRE LIVING**MODERN ONE BED GROUND FLOOR APARTMENT**WELL PRESENTED**

This is a ground floor one bedroom luxury apartment that has been created for modern living and low maintenance combining superb specification with contemporary styling and elegant finishing touches, within walking distance of Chesterfield Town Centre and the amenities of Alma Leisure Park including a gym, cinema and restaurant. Great for commuting on the M1 motorway and close to the Train Station, College and Royal Hospital.

The property comprises of a spacious lounge diner, modern separate kitchen with oven, hob and washer dryer, modern family bathroom with white suite, spacious double bedroom with space for wardrobes/dressing table/desk and en suite shower room. There is allocated parking for one car. Electric Heating and uPVC Double Glazing.

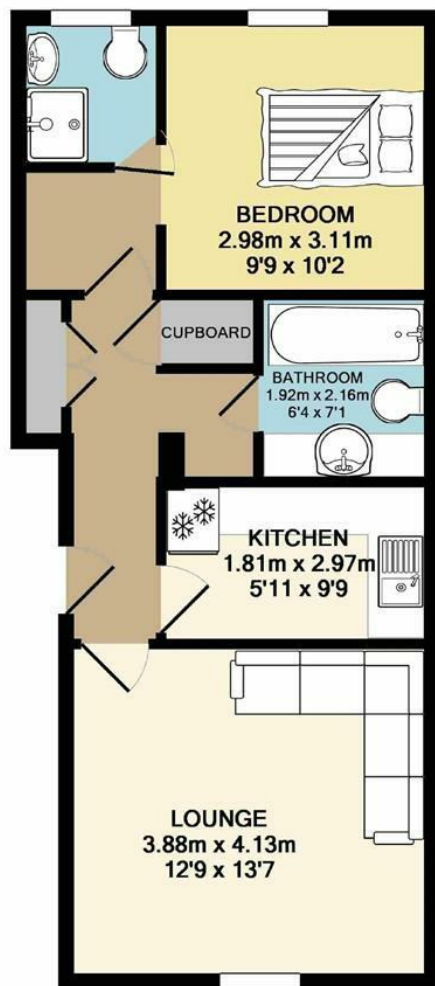
****Video Tour Available - Take a Look Around****

****If you would like to view this property, or apply for it, please click the 'Request Details' button on Rightmove and enter your information****

****Please note the photos are from a previous let****

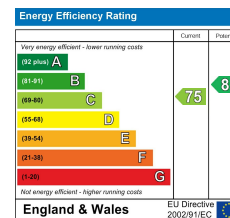
Disclaimer

These particulars do not constitute part or all of a contract. While we endeavour to make our particulars fair, accurate and reliable, they are only a general guide to the property the photos are for reference purpose only, the white goods advertised may not be in situ and and if there are any points which are of particular importance to you or any particular white goods required please check with the office and we will be pleased to check the position on these



TOTAL APPROX. FLOOR AREA 47.5 SQ.M. (511 SQ.FT.)

Whilst every attempt has been made to ensure the accuracy of the floor plan contained here, measurements of doors, windows, rooms and any other items are approximate and no responsibility is taken for any error, omission, or mis-statement. This plan is for illustrative purposes only and should be used as such by any prospective purchaser. The services, systems and appliances shown have not been tested and no guarantee as to their operability or efficiency can be given
Made with Metropix ©2018



Mansfield branch
24 Albert Street
Mansfield, NG1
01623 621001

Clowne branch
26 Mill Street,
Clowne, S43 4JN
01246 810519

Clay Cross branch
20 Market Street,
Clay Cross, S45 9JE
01246 251194

Chesterfield branch
33 Holywell Street,
Chesterfield, S41 7SA
01246 221039

PINEWOOD

